



INTERLAKE WILDFIRE RESTORATION: NEKOTE LP PROJECT 2025

**FALL SEEDLING
ASSESSMENT REPORT
Nisokapawino Forestry Management Corporation**

PREPARED BY
Farron Sharp
Miroslav Stepan



NEKOTE LP

INTERLAKE WILDFIRE RESTORATION:

FALL SEEDLING SURVIVAL ASSESSMENT REPORT

May of 2025, members of the Nekote LP (Chemawawin Cree Nation, Mathias Colomb Cree Nation, Misipawistik Cree Nation, Mosakahiken Cree Nation, Opaskwayak Cree Nation, Sapotaweyak Cree Nation, and Wusksi Sipiik First Nation) and Summit Reforestation planted 3 million trees aimed to grow and sequester carbon in an area ravaged by wildfire through BGPP's Interlake Wildfire Restoration Project. Trees planted were a mix between native jack pine and black spruce. All seed was collected from the neighbouring areas with a total of 1,250 hectares replanted.

The area was initially logged to salvage wood infested by the jack pine bud worm. Shortly after harvest, the 2021 Interlakes wildfire moved through the area, destroying all seed source and new seedlings. There were no plans to reforest until Blue Green Planet Partners; Nekote LP, secured a planting project with the Federal Governments 2 Billion Tree Program funding to plant native jack pine seedlings in the affected area. Due to the lack of viable seed source after the wildfire, the area deemed slow to regenerate - if at all.

A recent report was completed on October 16th by the Nisokapawino Forest Management Corporation (NFMC) to assess the success rate and status of the seedlings planted in May 2025. NFMC's forest technician verified there was a high seedling survival rate. The current survival rate sits at 99%.

The BGPP team is grateful to have led the opportunity to work with and learn from the people that comprise the Nekote LP and Summit Reforestation. 12 members from the Nekote LP communities took part in the challenging physical and mental work that tree planting entails, and the results were excellent. To date, 41 members of the surrounding communities have been hired and trained. This planting season 68 Summit tree planters, and 11 members of Summit management contributed to this project. 40 of which were women, 12 identified as indigenous, and 4 identified as minorities.

BGPP is thankful to have partnered with the hard-working members of the Nekote LP communities. We look forward to engaging more members and increasing the amount of local tree planters trained. A significant highlight of the season was the presence of a camp elder on site. Andy brought cultural sweats, rattle making and drum making workshops into camp. He provided guidance, story telling and a warm presence in camp that we are deeply grateful for. We hope to have him back for the 2026 planting season.

Blue Green Planet is a growing initiative aiming to plant trees in areas where the land and communities are most impacted by climate change. We could not operate to the capacity we do without the support of our partners. Please visit www.bgpp.earth for more information.



PO Box 3726 The Pas, Manitoba R9A 1S3

October 15, 2025

Farron Sharp
Project Manager
Blue Green Planet Project

2025 CFP 114 Nekote Limited Partnership 2024-2025 – 2 Billion Trees Program

Seedling Survival Assessment Report

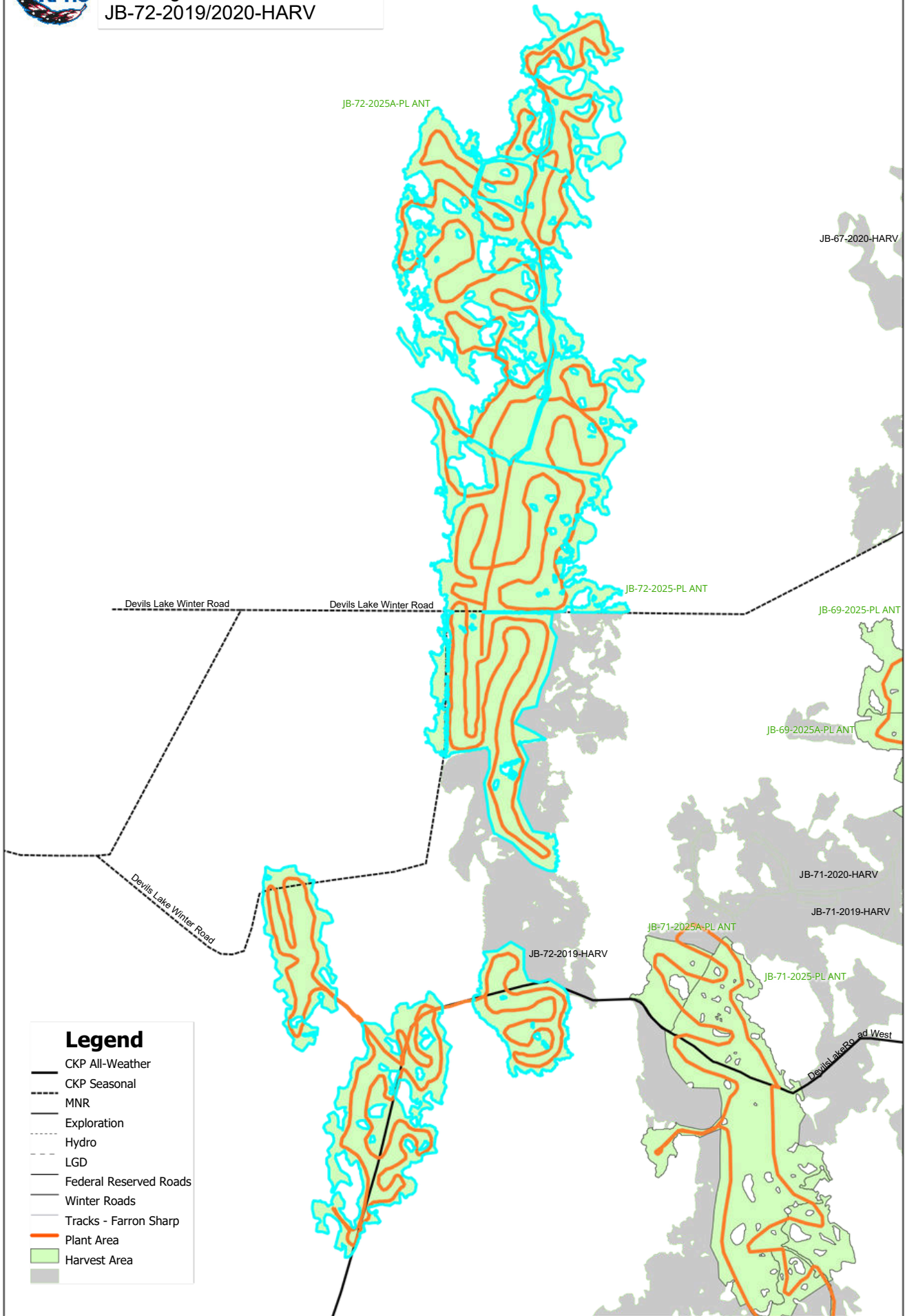
Blocks: JB-61-2020-HARV (3.77 ha) JB-63-2020-HARV (45.49 ha) JB-64-2020-HARV (79.3 ha) JB-65-2020-HARV (47.85 ha) JB-69-2019-HARV (229.48 ha) JB-69-2020-HARV (34.01 ha) JB-71-2019-HARV (79.27 ha) JB-71-2020-HARV (25.0 ha) JB-72-2019-HARV (146.75 ha) JB-72-2020-HARV (207.34 ha)

Blocks have been planted in May 2025 with density of 2400 seedlings per hectare. Species composition was 95% Jack Pine (*pinus banksiana*) and 5% Black Spruce (*picea mariana*). Management from Summit Reforestation have been constantly monitoring density and quality during planting. Seedling Survival Assessment was conducted at the end of September 2025. High seedling survival rate was observed throughout all planted areas. Red needles were present on some seedlings, which might be caused by planting shock or summer drought. This is usual occurrence during first few years after planting. There were few dead seedlings observed during the assessment (under 1%). Please see maps and photos for reference.

Miroslav Stepan
Forest Technician
204-620-3757
Miroslav.stepan@niso.ca



2 Billion Tree Program 2025
Seedlings Survival Assessment
JB-72-2019/2020-HARV



Legend

- CKP All-Weather
- - - CKP Seasonal
- - - MNR
- - - Exploration
- - - Hydro
- - - LGD
- Federal Reserved Roads
- Winter Roads
- Tracks - Farron Sharp
- Plant Area
- Harvest Area



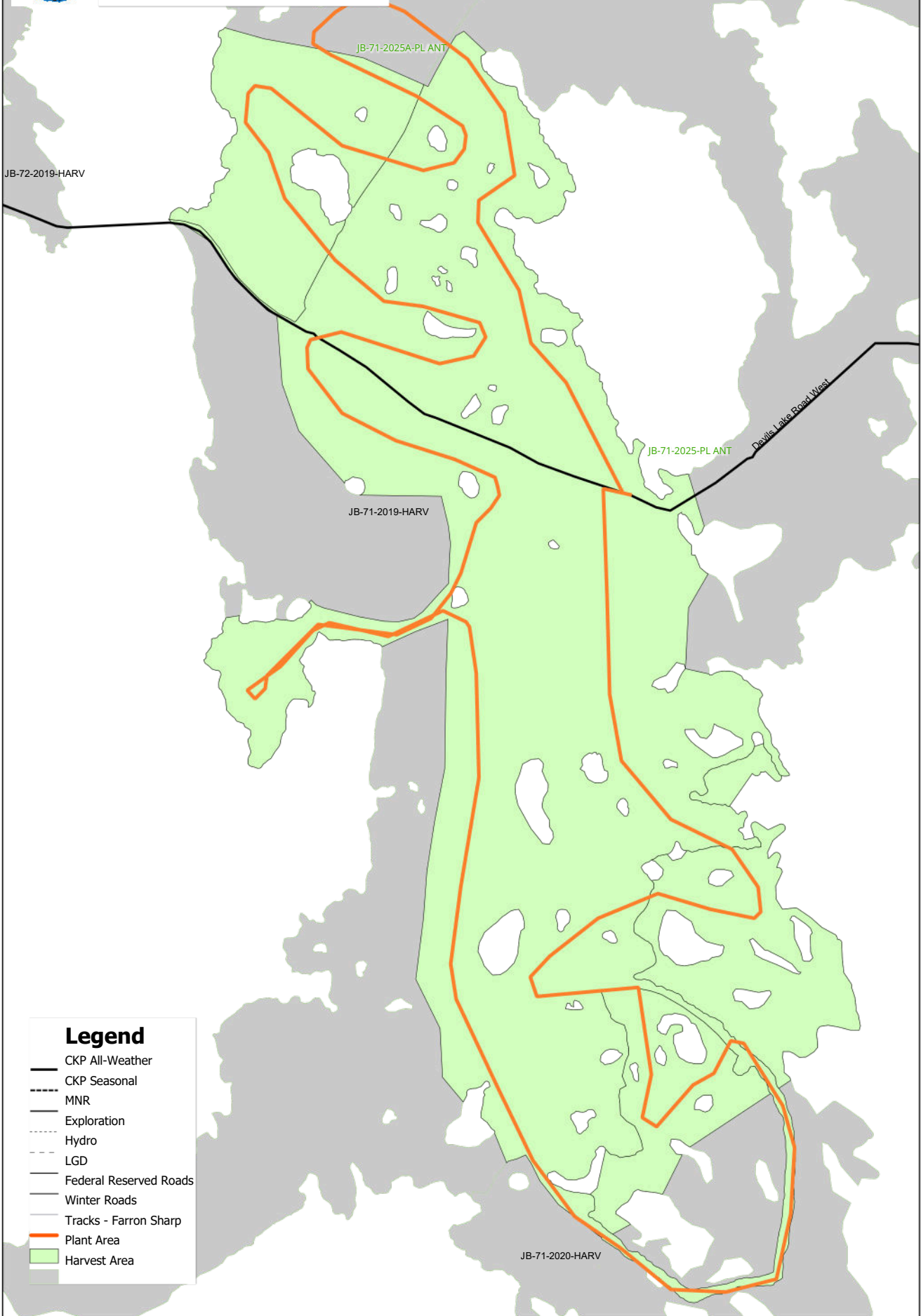
1:17,821

0 0.33 0.65 1.3 1.95 2.6 Kilometers

11/20/2024



2 Billion Tree Program 2025
Seedlings Survival Assessment
JB-71-2019/2020-HARV



Legend

- CKP All-Weather
- - - CKP Seasonal
- - - MNR
- - - Exploration
- - - Hydro
- - - LGD
- Federal Reserved Roads
- Winter Roads
- Tracks - Farron Sharp
- Plant Area
- Harvest Area



1:5,937

0

0.1

0.2

0.4

0.6

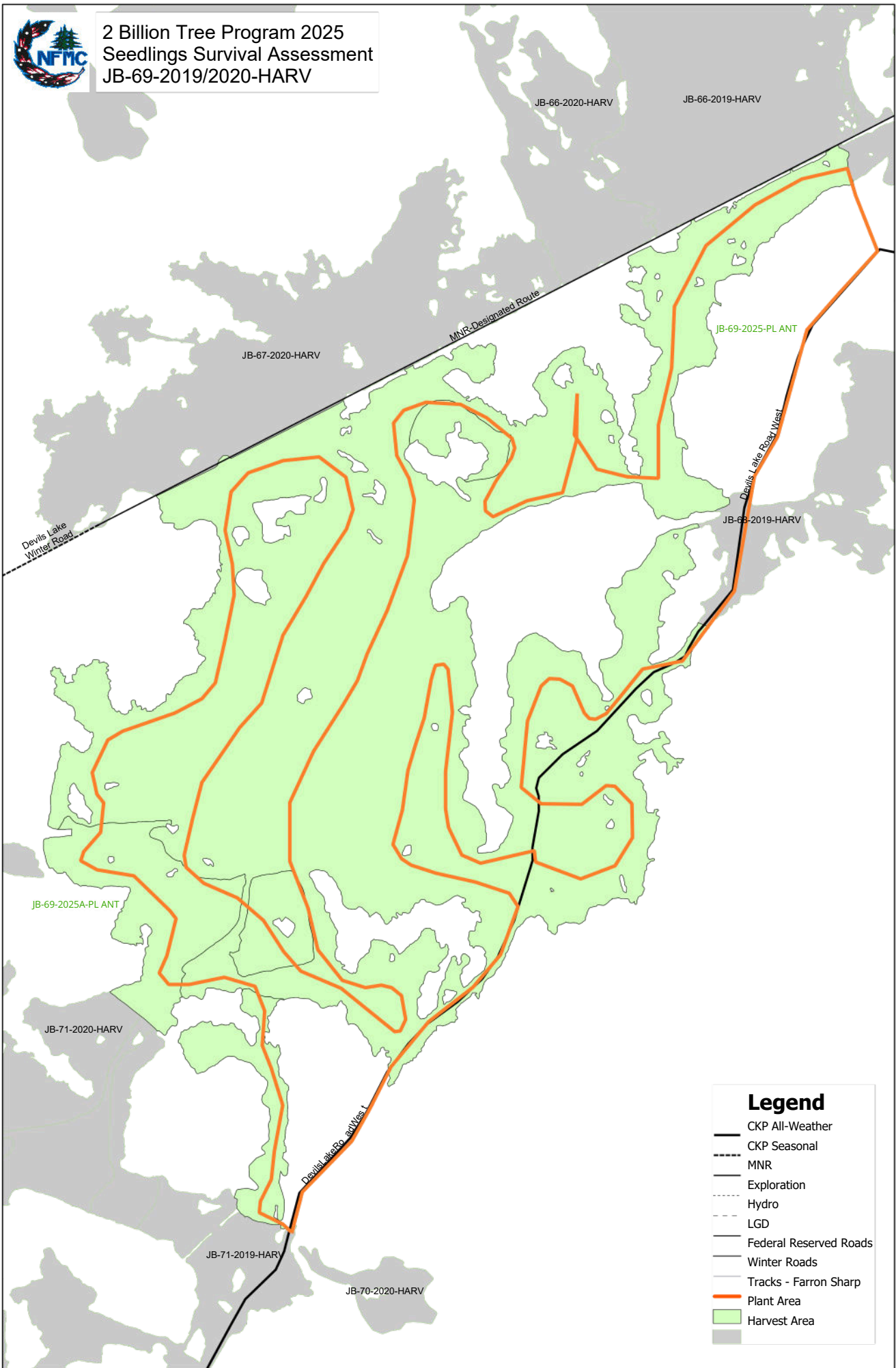
0.8

Kilometers

11/20/2024



2 Billion Tree Program 2025
Seedlings Survival Assessment
JB-69-2019/HARV



Legend

- CKP All-Weather
- - - CKP Seasonal
- MNR
- - - Exploration
- - - Hydro
- - - LGD
- Federal Reserved Roads
- - - Winter Roads
- - - Tracks - Farron Sharp
- Plant Area
- Harvest Area

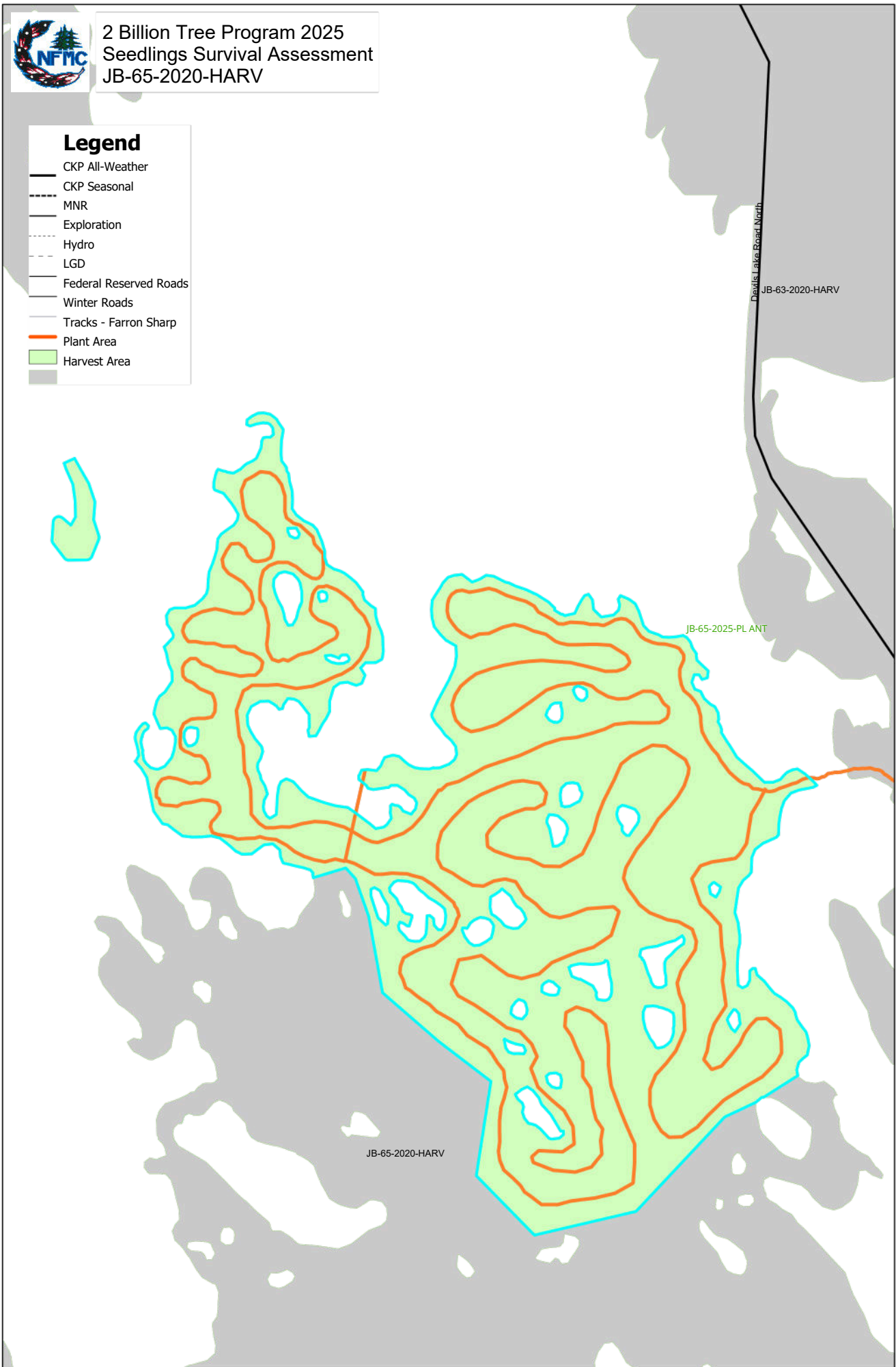




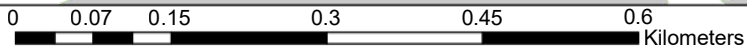
2 Billion Tree Program 2025
Seedlings Survival Assessment
JB-65-2020-HARV

Legend

- CKP All-Weather
- - - CKP Seasonal
- - - MNR
- - - Exploration
- - - Hydro
- - - LGD
- Federal Reserved Roads
- Winter Roads
- Tracks - Farron Sharp
- Plant Area
- Harvest Area



1:4,698



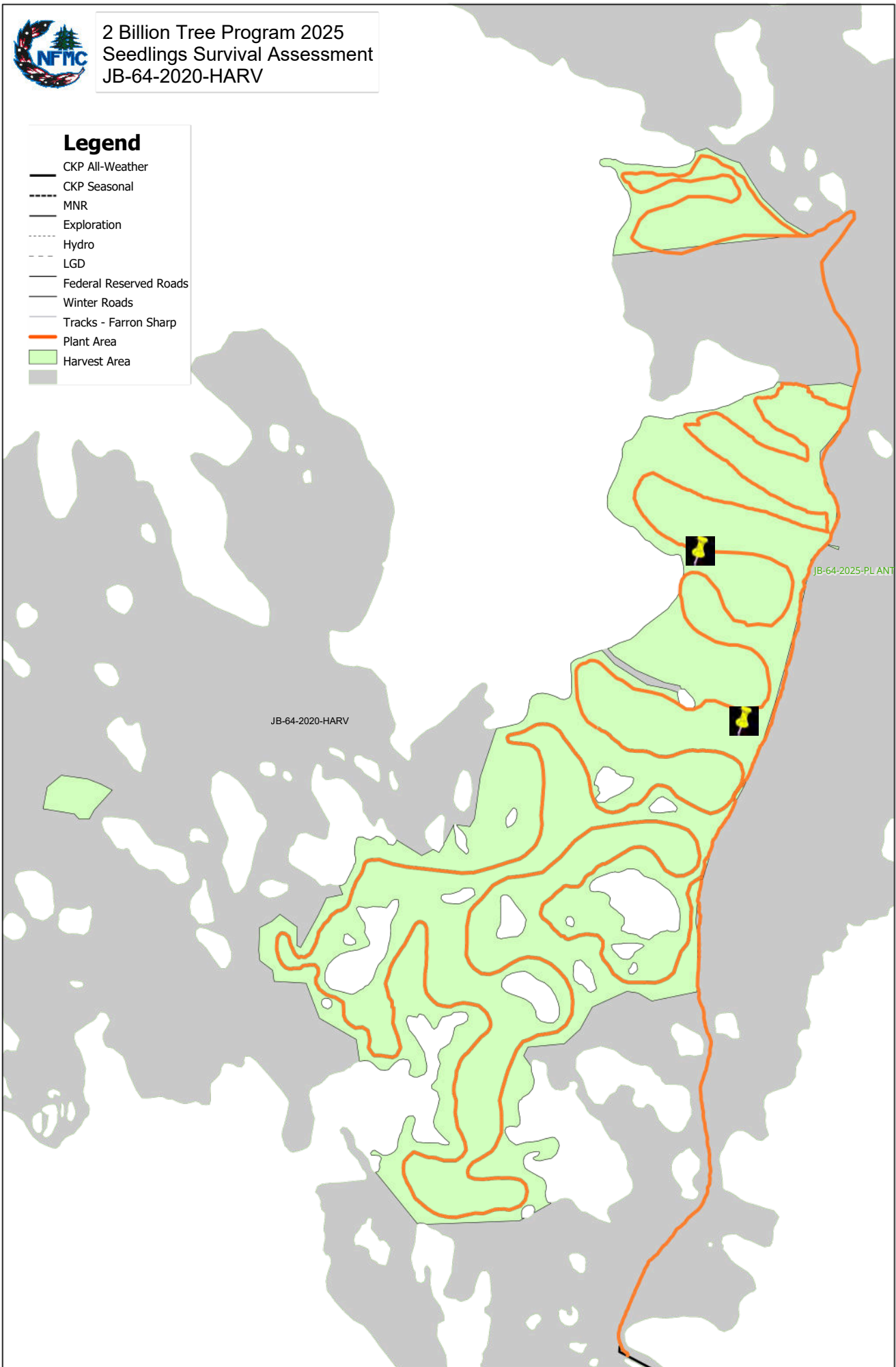
11/20/2024



2 Billion Tree Program 2025
Seedlings Survival Assessment
JB-64-2020-HARV

Legend

- CKP All-Weather
- - - CKP Seasonal
- MNR
- - - Exploration
- - - Hydro
- - - LGD
- Federal Reserved Roads
- Winter Roads
- Tracks - Farron Sharp
- Plant Area
- Harvest Area



1:6,876

0 0.13 0.25 0.5 0.75 1 Kilometers

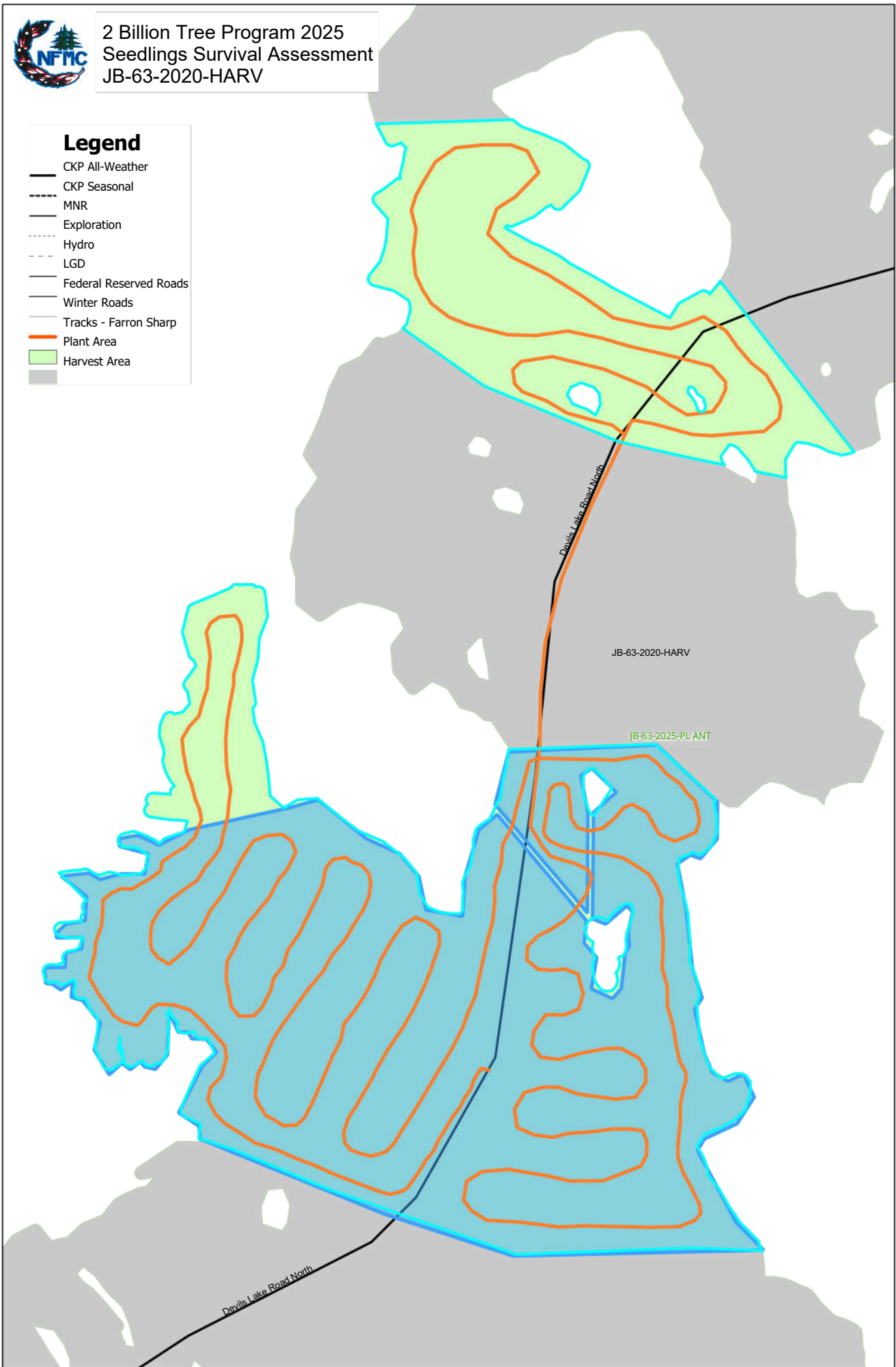
11/20/2024



2 Billion Tree Program 2025
Seedlings Survival Assessment
JB-63-2020-HARV

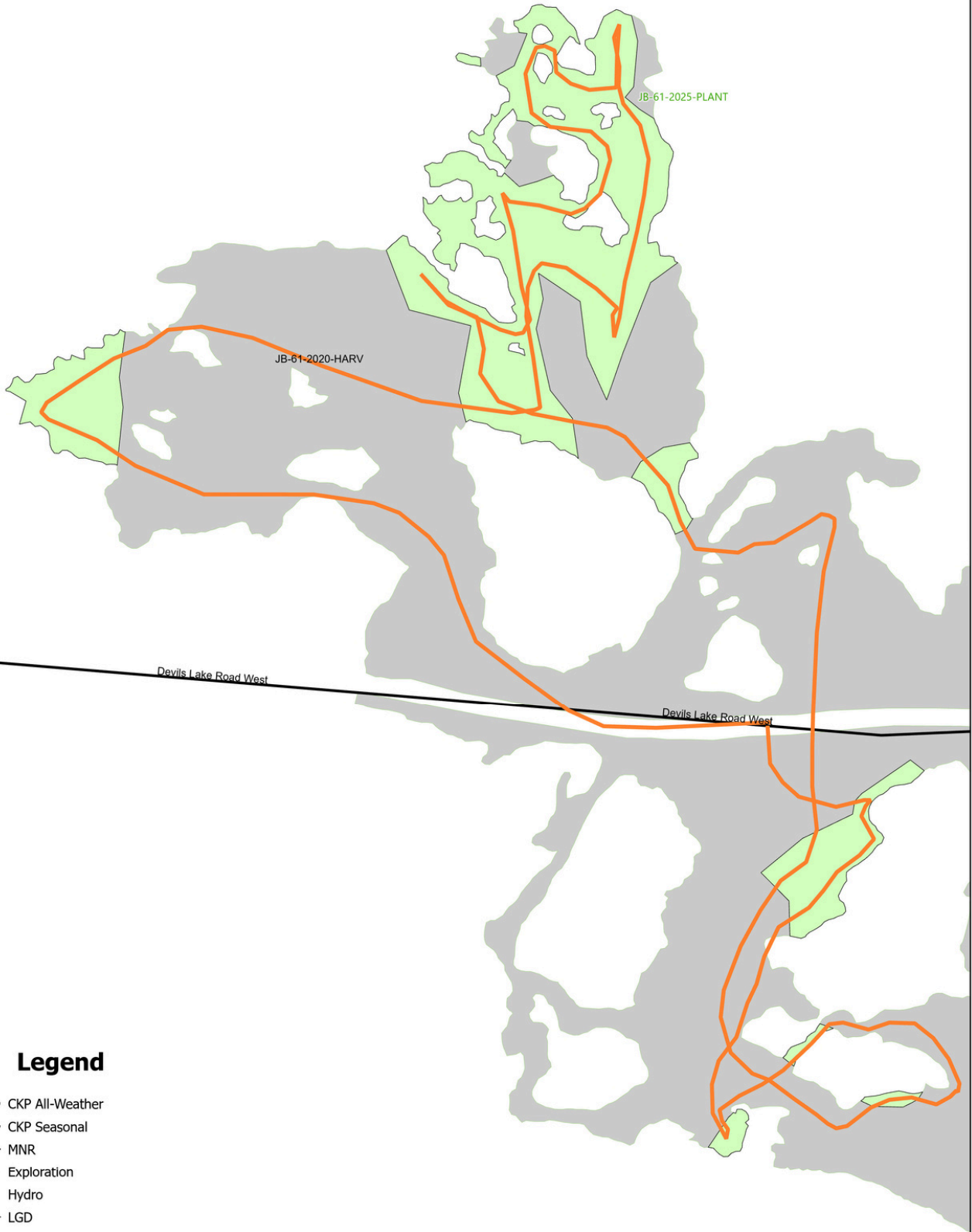
Legend

- CKP All-Weather
- - - CKP Seasonal
- - - MNR
- - - Exploration
- - - Hydro
- - - LGD
- Federal Reserved Roads
- Winter Roads
- Tracks - Farron Sharp
- Plant Area
- Harvest Area
-





2 Billion Tree Program 2025
Seedlings Survival Assessment
JB-61-2020-HARV

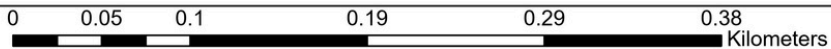


Legend

- CKP All-Weather
- - - CKP Seasonal
- MNR
- - - Exploration
- - - Hydro
- LGD
- Federal Reserved Roads
- Winter Roads
- Tracks - Farron Sharp
- Plant Area
- Harvest Area



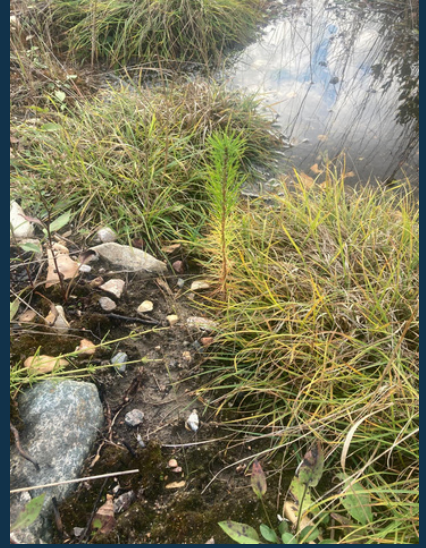
1:2,624



11/20/2024

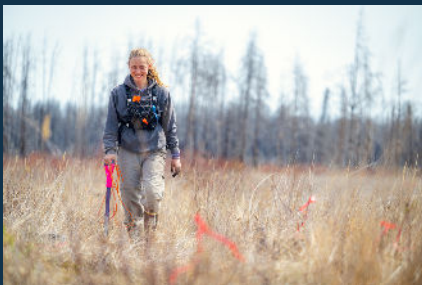
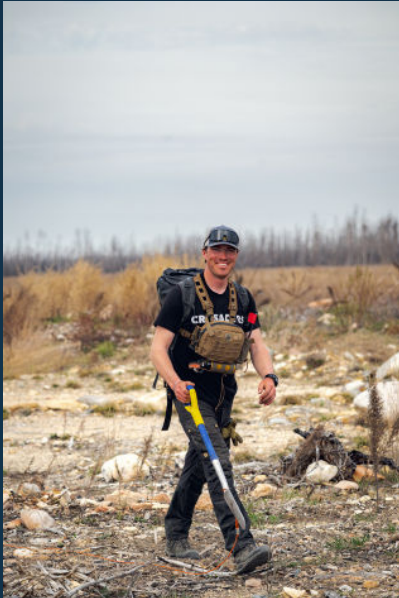


ASSESSMENT PHOTOS



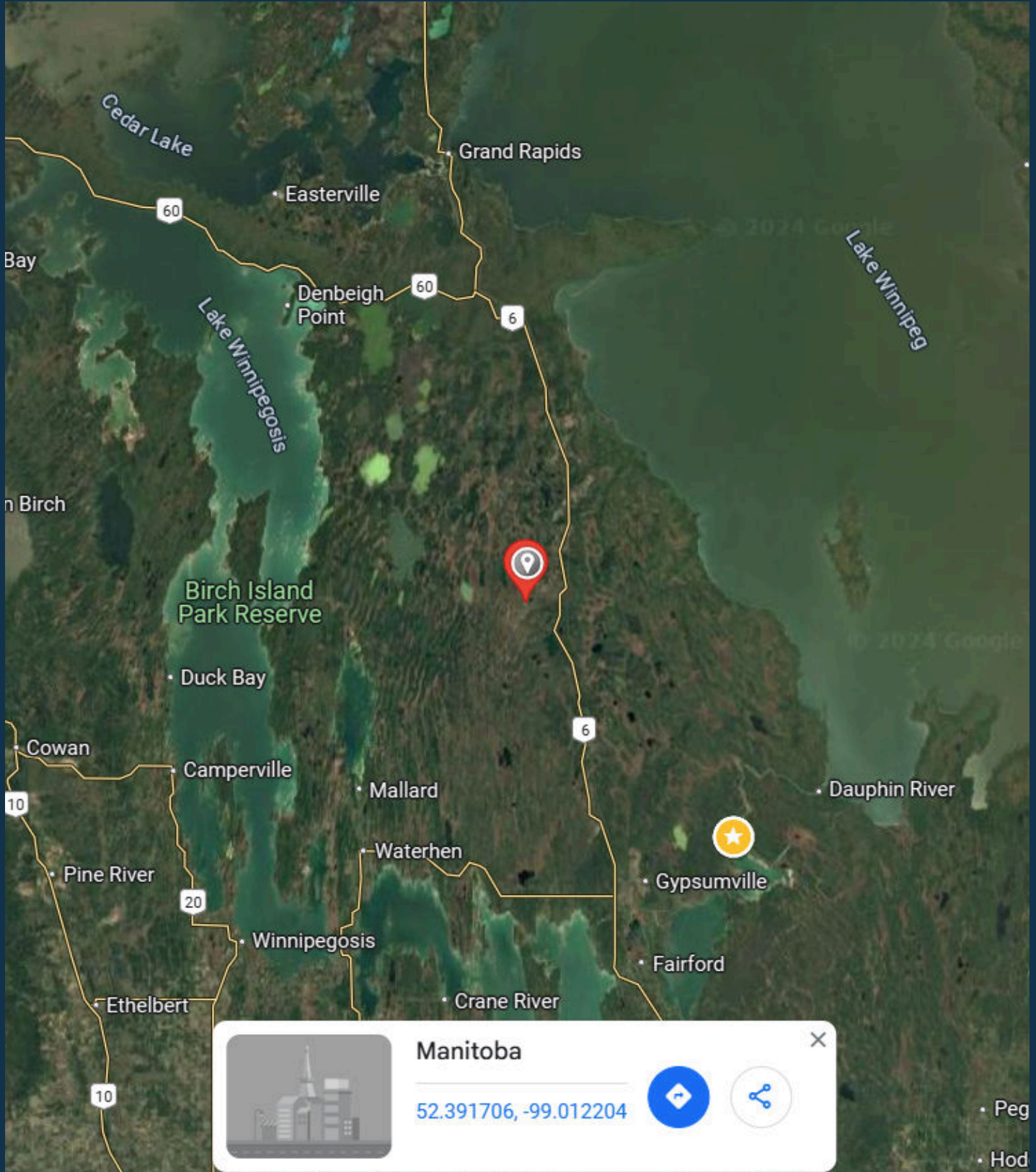


PLANTING PHOTOS





PLANTING SITE





BLUE
GREEN
PLANET
PROJECT™

IN PARTNERSHIP



Nekoté
LIMITED PARTNERSHIP



HELLO NATURE



ADVENTURE TOURS

MERCHANT • COLLECTOR
• PRESERVATION •

LANDON



Arbor Day Foundation®



ONETREEPLANTED



Into The Wild Tours
Explore Beyond



alivingtribute.org

WEST LEGAL

BARRISTERS & SOLICITORS