

INTERLAKE WILDFIRE RESTORATION: NEKOTE LP PROJECT 2026

SPRING PROGRESS REPORT
Blue Green Planet Project

PREPARED BY
Farron Sharp

IN COLLABORATION WITH
NFMC
Woodmere Nurseries.



NEKOTE LP

**INTERLAKE WILDFIRE RESTORATION:
SPRING PROGRESS UPDATE**

This March, BGPP travelled to The Pas, OCN, Wuskwi Sipiik, Cross Lake, Moose Lake, Chimawawin and Sapotawayek, to spread the word about our upcoming tree plant. We established and strengthened our presence by visiting community centers, high schools, and colleges. We had flyers, planting bags, shovels and plenty of coffee with us. Word is spreading about our upcoming plant and our hiring is moving along nicely. Currently, we have 7 returning planters, our highest number to date, as well as 2 joining us for management training in the pre-season.

Spring has just about sprung, and with that our 5th season reforesting the Devil's Lake wildfire ground. Trees for the upcoming season are patiently awaiting the thaw. Following that they will be packed and shipped to the worksite for approximately May 1st.

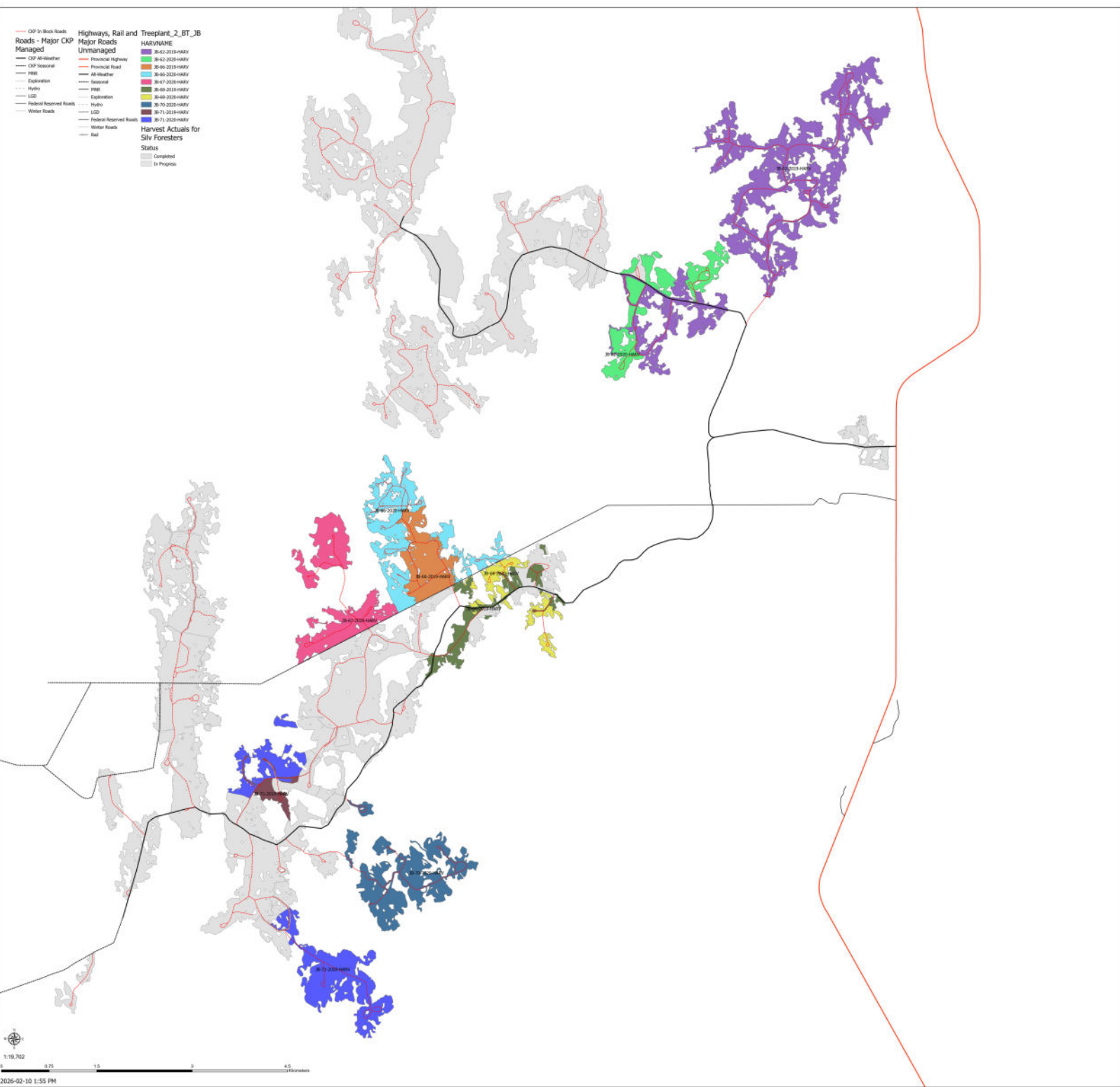
For the 2026 plant, we will again be working in the Devil's Lake wildfire region of Central Manitoba. There has been a higher snow pack than the past few years, but the temperatures seem to be right on par for a typical Northern Boreal winter. We are currently projecting a start date of May 1st. Should all go to plan, this will be our final year reforesting Devils Lake, before moving to a new region.

Woodmere Nurseries has filled our order for the 2025 planting season totaling 3 million trees lifted and packaged for the upcoming spring season. The site is currently covered with snow, viewing was done this past October by Nisokapawino Forest Management Corporation and BGPP to assess the ground and determine what trees should go where. The land is mostly drive, ATV and walk accessible with some trees to be flown in. We are bringing back an on site counsellor for the 3rd season to aid in supporting all community workers.

Thank you again for your support and continuing to spread the word through your contributions!

MAPS

2026 2BT Tree Plant Program - JB blocks



Thanks to our partners!



livingtribute.org



ONETREEPLANTED



Into The Wild Tours
Explore Beyond

